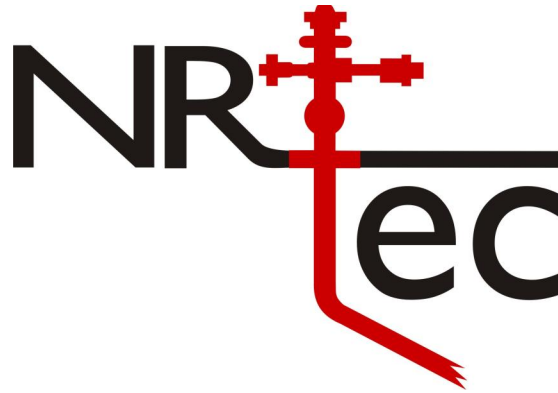


ACOUSTIC PRESSURE SURVEY
BUILD-UP TEST



SAMPLE 1-2-3-4
100/01-02-003-04W5/0
Surface Location: 02-02-003-04W5 (DEV)
License: 1234567
Field: PROLIFIC
Formation: GDSD
Pool: GOODSANDS

DECEMBER 2011

Prepared by: NR-Tec Analyst

Date: 2011-Dec-23

Prepared for: BOB LOBLAW
SAMPLE COMPANY

SAMPLE COMPANY

ACOUSTIC PRESSURE SURVEY (BUILD-UP)

SAMPLE 1-2-3-4

100/01-02-003-04W5/0

PROLIFIC

POOL: GOODSANDS

2011-DEC-13 TO 2011-DEC-20

TEST SUMMARY:

- An acoustic well sounder instrument was installed into the casing on 2011-12-13 at 13:04 hours. The fluid level was at 188.2 joints.
- The well was shut-in on 2011-12-13 at 13:04 hours to start the build-up.
- The build-up test was concluded on 2011-12-20 at 16:04 hours.
- A final bottomhole pressure of 8,810 kPa (absolute) was calculated at the mid-point of the producing interval after 7.1 days of shut-in.
- The rate of change in pressure during the last 8.0 hours of shut-in is 0.14 kPa/hr.

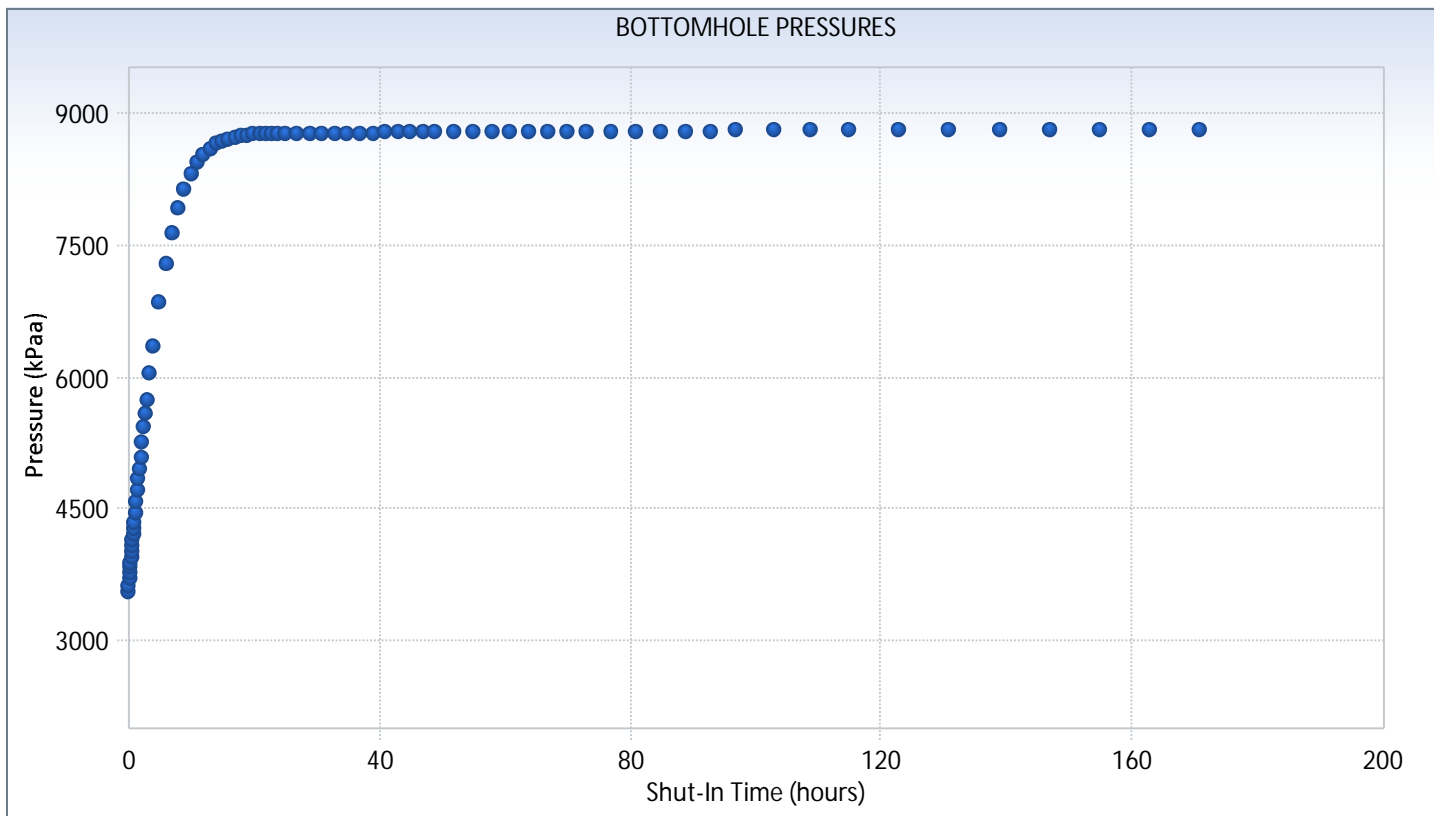
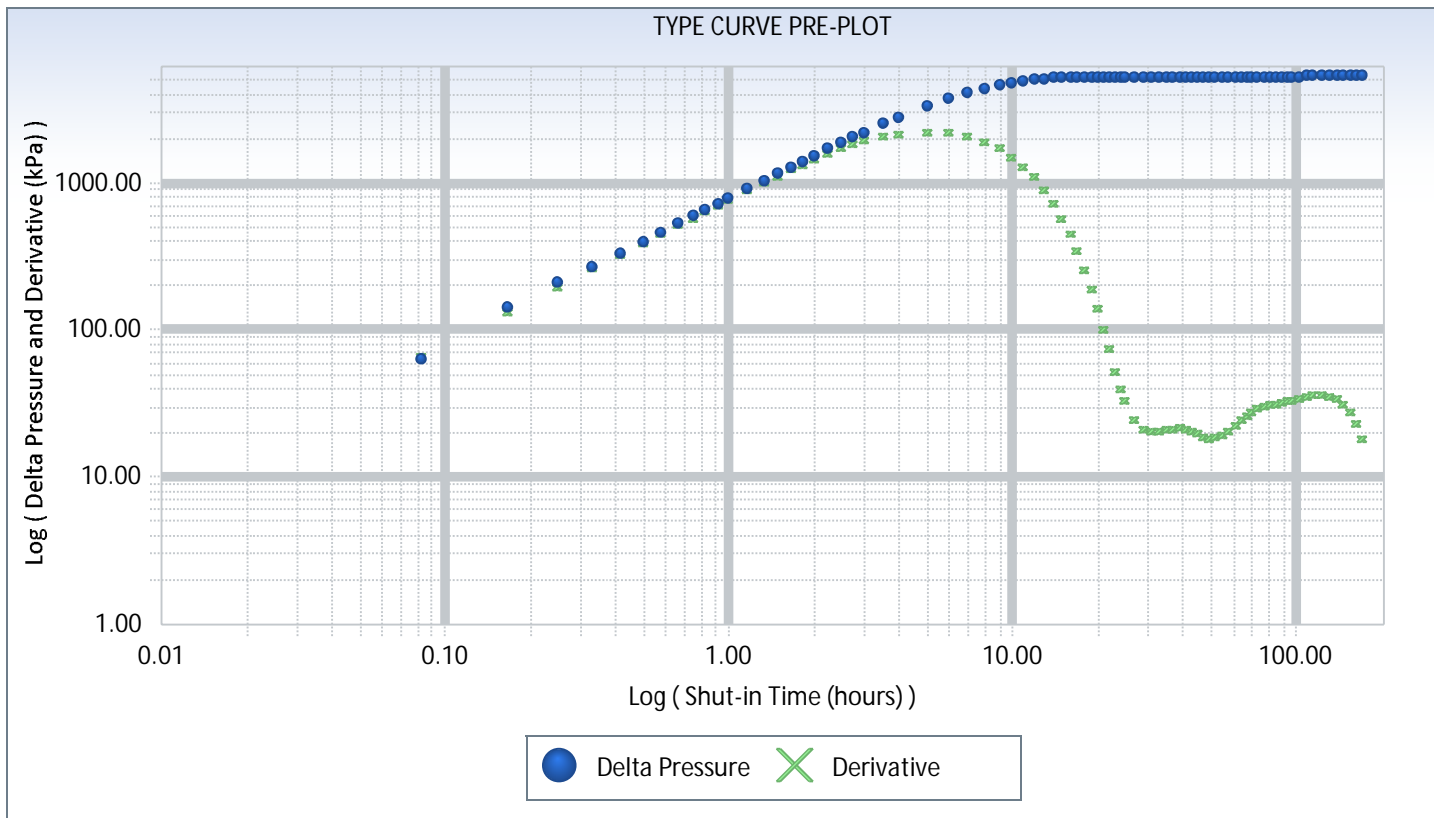
PRESSURE DATA CALCULATIONS:

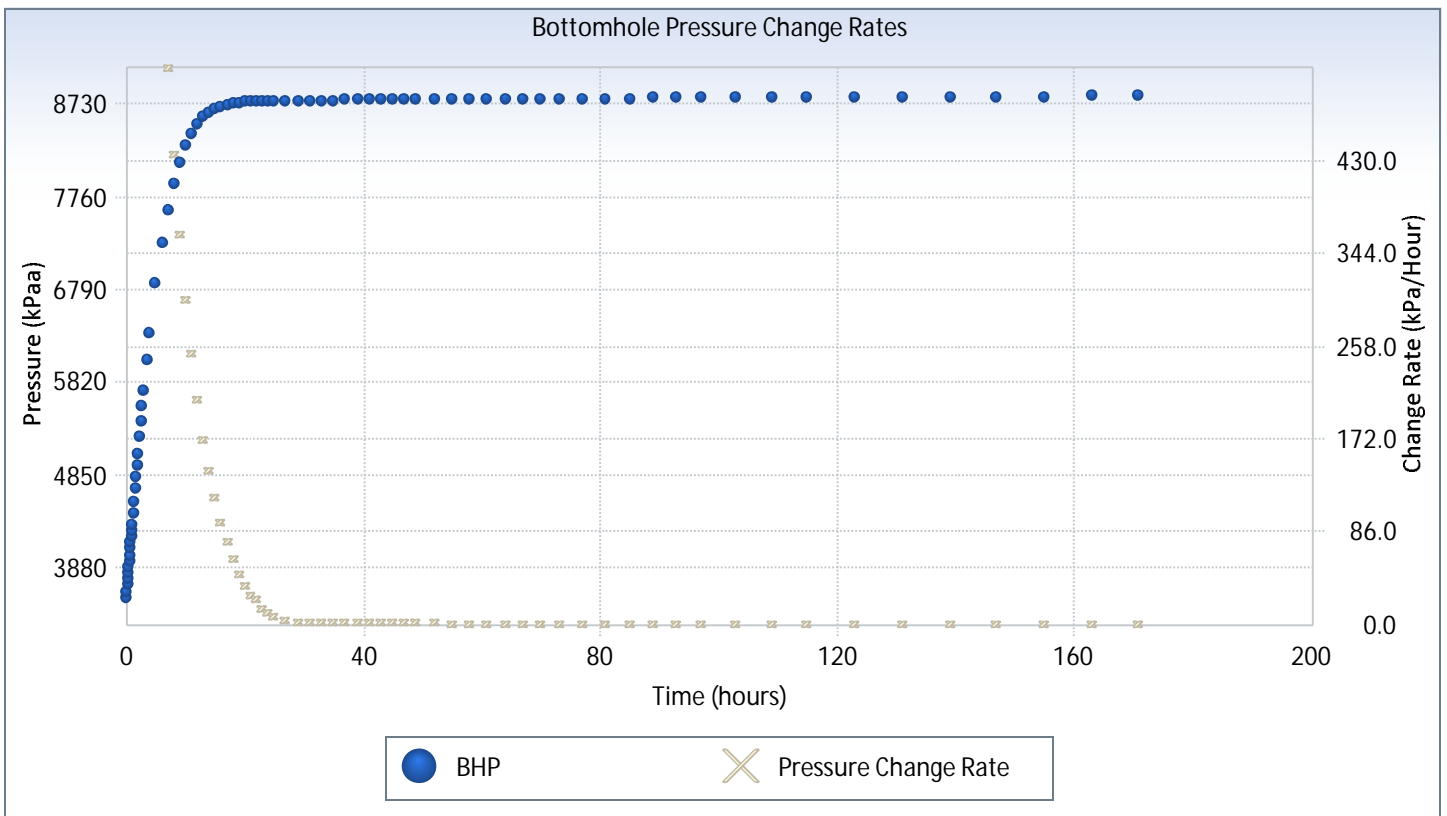
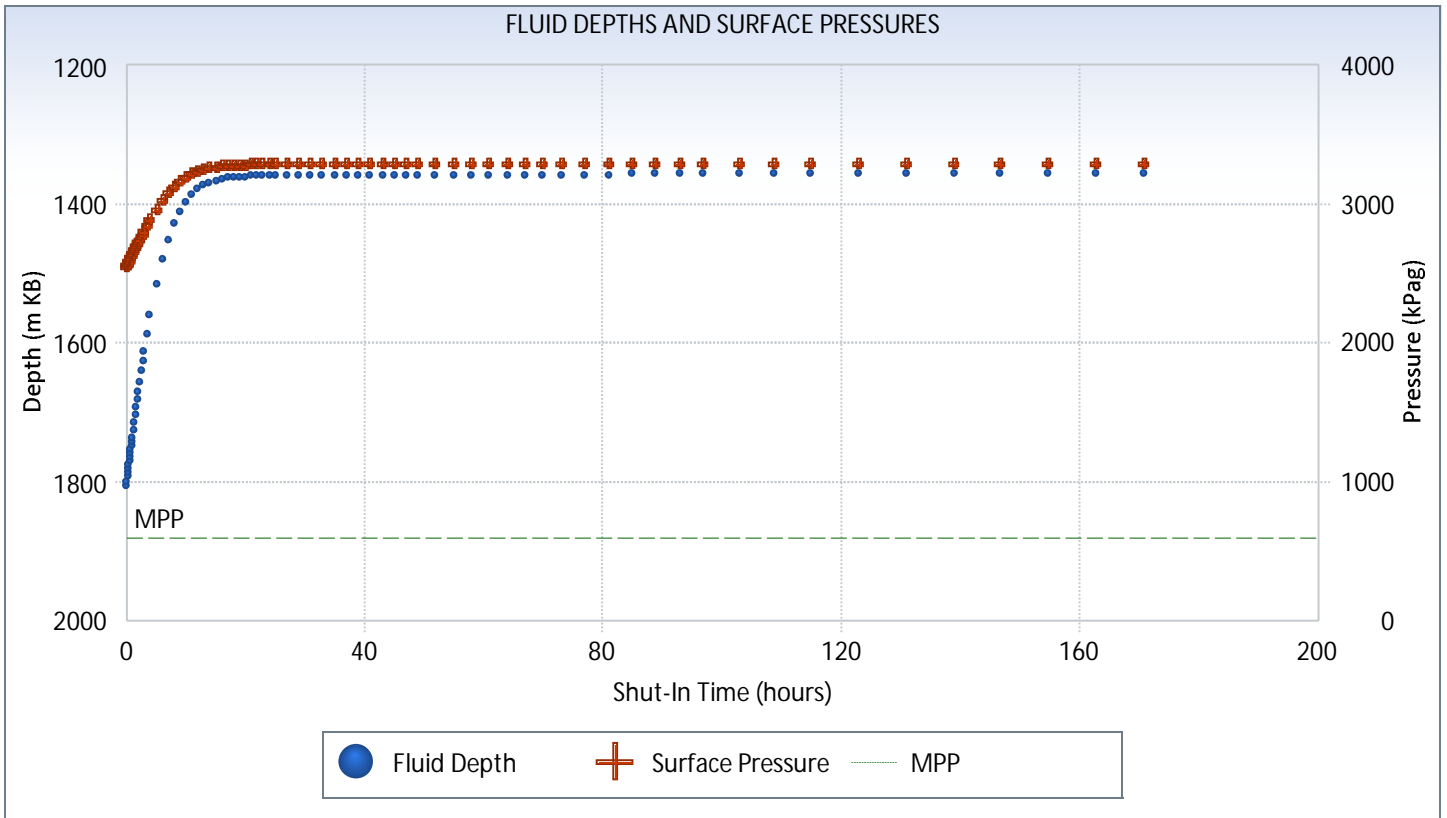
- The bottomhole pressures were calculated using the following information:

Atmospheric Pressure	93.0 kPa
Formation Depth	1,879.70 m KB (TVD) / 1,879.75 m KB
Oil Gravity	35.40 °API
Water Gravity	1.050
Gas Gravity	0.700
Oil Production	1.24 m ³ /d
Water Production	16.46 m ³ /d
Gas Production	0.03 E ³ m ³ /d
Bottomhole Temperature	62.20 °C

ATTACHMENTS:

ACOUSTIC WELLSOUNDER PRESSURE SURVEY DATA
TYPE CURVE PRE-PLOT
BOTTOMHOLE PRESSURE VERSUS TIME
CASING PRESSURE VERSUS TIME
FLUID LEVEL VERSUS TIME
PRESSURE FILE (PAS FORMAT)





ACOUSTIC WELLSOUNDER PRESSURE SURVEY

COMPANY: SAMPLE COMPANY	POOL: GOODSANDS	U.W.I.: 100/01-02-003-04W5/0
FIELD: PROLIFIC	WELL STATUS: Pumping Oil	WELL NAME: SAMPLE 1-2-3-4
SHUT-IN: 2011-Dec-13 @ 13:04:32	LICENSE: 1234567	SURFACE LCN.: 02-02-003-04W5 (DEV)

ELEVATIONS:

Kelly Bushing (KB): 688.20 m
 Casing Flange (CF): 683.60 m
 KB to CF: 4.60 m

FLUID PROPERTIES:

Gas Gravity: 0.700
 Oil Gravity: 35.400 °API
 Water Gravity: 1.050

TEMPERATURES:

Surface: 0.00 °C
 Reservoir: 62.20 °C

PRODUCTION RATES:

Gas: 0.03 E³m³/d
 Oil: 1.24 m³/d
 Water: 16.46 m³/d

TUBING:

Total Joints: 196.000
 Tubing Bottom: 1880.50 m KB (MD)
 Average Joint Length: 9.571 m

PRODUCING INTERVAL:

Top: 1,878.45 m KB (TVD)
 1,878.50 m KB (MD)
 Bottom: 1,880.95 m KB (TVD)
 1,881.00 m KB (MD)
 Mid-Point: 1,879.70 m KB (TVD)
 1,879.75 m KB (MD)

NOTES:

All calculated depths have been corrected to True Vertical Depth.

NO.	TEST		JOINTS		SURFACE		GAS COLUMN			OIL COLUMN			EMULSION COLUMN			PRESSURE @ MPP
	TIME	DATE	TIME	TO LIQUID	TO PRESSURE	HEIGHT (m)	GRADIENT (kPa/m)	PRESSURE (kPa)	HEIGHT (m)	GRADIENT (kPa/m)	PRESSURE (kPa)	HEIGHT (m)	GRADIENT (kPa/m)	PRESSURE (kPa)		
1	0.000	2011-Dec-13	13:04:32	188.21	2549.4	1801.3	0.237	426.1	72.6	7.793	565.5	1.2	9.944	12.4	3553.4	
2	0.083	2011-Dec-13	13:09:30	187.64	2557.4	1795.8	0.237	426.3	72.6	7.794	565.5	6.8	9.945	67.1	3616.3	
3	0.166	2011-Dec-13	13:14:30	186.90	2566.0	1788.8	0.238	426.2	72.5	7.795	565.5	13.8	9.945	137.1	3694.8	
4	0.249	2011-Dec-13	13:19:30	186.29	2572.3	1783.0	0.239	426.0	72.5	7.796	565.5	19.6	9.946	194.9	3758.7	
5	0.333	2011-Dec-13	13:24:30	185.72	2580.0	1777.5	0.240	426.2	72.5	7.797	565.6	25.1	9.946	249.6	3821.3	
6	0.416	2011-Dec-13	13:29:30	185.18	2587.1	1772.3	0.241	426.2	72.5	7.797	565.6	30.3	9.947	301.3	3880.2	
7	0.499	2011-Dec-13	13:34:30	184.54	2594.7	1766.2	0.241	426.2	72.5	7.798	565.6	36.4	9.947	362.1	3948.6	
8	0.583	2011-Dec-13	13:39:30	184.00	2601.6	1761.0	0.242	426.2	72.5	7.799	565.6	41.6	9.947	413.8	4007.3	
9	0.666	2011-Dec-13	13:44:30	183.36	2609.4	1754.9	0.243	426.2	72.5	7.800	565.7	47.7	9.948	474.7	4076.0	
10	0.749	2011-Dec-13	13:49:30	182.75	2616.5	1749.1	0.244	426.1	72.5	7.801	565.7	53.5	9.948	532.5	4140.9	
11	0.833	2011-Dec-13	13:54:30	182.21	2624.3	1743.9	0.244	426.3	72.5	7.801	565.7	58.7	9.949	584.2	4200.5	
12	0.916	2011-Dec-13	13:59:30	181.60	2631.6	1738.1	0.245	426.2	72.5	7.802	565.8	64.5	9.949	642.0	4265.6	
13	0.999	2011-Dec-13	14:04:30	181.06	2638.9	1732.9	0.246	426.3	72.5	7.803	565.8	69.7	9.950	693.7	4324.7	
14	1.166	2011-Dec-13	14:14:30	179.88	2653.6	1721.6	0.248	426.2	72.5	7.805	565.8	81.0	9.950	806.3	4451.9	
15	1.333	2011-Dec-13	14:24:30	178.76	2668.1	1710.9	0.249	426.2	72.5	7.806	565.8	91.7	9.951	912.9	4573.0	
16	1.499	2011-Dec-13	14:34:30	177.58	2682.7	1699.6	0.251	426.0	72.5	7.808	565.9	103.0	9.952	1025.5	4700.1	
17	1.666	2011-Dec-13	14:44:30	176.43	2697.1	1688.6	0.252	425.9	72.5	7.809	565.9	114.0	9.953	1135.1	4824.0	
18	1.833	2011-Dec-13	14:54:30	175.28	2711.5	1677.6	0.254	425.7	72.5	7.811	566.0	125.1	9.954	1244.8	4948.0	
19	1.999	2011-Dec-13	15:04:30	174.17	2725.7	1666.9	0.255	425.5	72.5	7.812	566.0	135.8	9.955	1351.3	5068.7	
20	2.249	2011-Dec-13	15:19:30	172.57	2746.9	1651.6	0.258	425.4	72.4	7.815	566.1	151.0	9.956	1503.6	5242.0	
21	2.499	2011-Dec-13	15:34:30	170.98	2767.7	1636.4	0.260	425.1	72.4	7.817	566.2	166.3	9.957	1655.9	5415.0	
22	2.749	2011-Dec-13	15:49:30	169.51	2788.4	1622.3	0.262	425.1	72.4	7.819	566.3	180.4	9.958	1796.1	5575.8	
23	2.999	2011-Dec-13	16:04:30	168.07	2808.7	1608.6	0.264	425.0	72.4	7.820	566.4	194.1	9.959	1933.2	5733.4	
24	3.499	2011-Dec-13	16:34:30	165.26	2848.5	1581.7	0.269	424.7	72.4	7.824	566.6	221.0	9.961	2201.4	6041.3	
25	3.999	2011-Dec-13	17:04:30	162.65	2887.1	1556.6	0.273	424.6	72.4	7.827	566.7	246.1	9.962	2451.5	6329.9	
26	4.999	2011-Dec-13	18:04:30	158.02	2960.4	1512.3	0.281	424.6	72.4	7.832	567.0	290.4	9.965	2893.7	6845.7	
27	5.999	2011-Dec-13	19:04:30	154.25	3026.6	1476.3	0.288	425.2	72.4	7.836	567.2	326.4	9.968	3253.8	7272.7	
28	6.999	2011-Dec-13	20:04:30	151.22	3084.0	1447.3	0.294	425.9	72.4	7.838	567.4	355.4	9.970	3543.6	7621.0	

NO.	TEST		JOINTS TO LIQUID	SURFACE PRESSURE (kPaa)	GAS COLUMN			OIL COLUMN			EMULSION COLUMN			PRESSURE @ MPP (kPaa)	
	TIME	DATE			TIME	HEIGHT	GRADIENT	PRESSURE	HEIGHT	GRADIENT	PRESSURE	HEIGHT	GRADIENT		PRESSURE
	(hours)					(m)	(kPa/m)	(kPa)	(m)	(kPa/m)	(kPa)	(m)	(kPa/m)		(kPa)
29	7.999	2011-Dec-13	21:04:30	148.76	3132.0	1423.7	0.300	426.6	72.4	7.840	567.6	379.0	9.971	3778.7	7904.9
30	8.999	2011-Dec-13	22:04:30	146.88	3171.1	1405.7	0.304	427.3	72.4	7.842	567.8	397.0	9.972	3958.8	8124.9
31	9.999	2011-Dec-13	23:04:30	145.44	3201.9	1392.0	0.307	427.9	72.4	7.843	567.9	410.7	9.973	4096.1	8293.8
32	10.999	2011-Dec-14	00:04:30	144.33	3225.5	1381.3	0.310	428.2	72.4	7.843	568.0	421.4	9.974	4203.0	8424.6
33	11.999	2011-Dec-14	01:04:30	143.53	3243.2	1373.6	0.312	428.6	72.4	7.844	568.0	429.0	9.974	4279.3	8519.1
34	12.999	2011-Dec-14	02:04:30	142.89	3256.4	1367.5	0.313	428.7	72.4	7.844	568.1	435.1	9.975	4340.4	8593.5
35	13.999	2011-Dec-14	03:04:30	142.47	3265.9	1363.6	0.315	428.9	72.4	7.845	568.1	439.1	9.975	4380.1	8643.1
36	14.999	2011-Dec-14	04:04:30	142.15	3272.8	1360.5	0.315	429.0	72.4	7.845	568.2	442.2	9.975	4410.6	8680.6
37	16.000	2011-Dec-14	05:04:31	141.96	3277.8	1358.7	0.316	429.2	72.4	7.845	568.2	444.0	9.975	4428.9	8704.1
38	16.999	2011-Dec-14	06:04:30	141.80	3281.4	1357.2	0.316	429.2	72.4	7.845	568.2	445.5	9.975	4444.2	8723.0
39	17.999	2011-Dec-14	07:04:30	141.68	3283.9	1355.9	0.317	429.2	72.4	7.845	568.2	446.7	9.975	4456.4	8737.8
40	18.999	2011-Dec-14	08:04:30	141.61	3285.8	1355.3	0.317	429.3	72.4	7.845	568.2	447.4	9.975	4462.5	8745.8
41	19.999	2011-Dec-14	09:04:30	141.55	3287.2	1354.7	0.317	429.3	72.4	7.845	568.2	448.0	9.975	4468.6	8753.4
42	20.999	2011-Dec-14	10:04:30	141.52	3288.3	1354.4	0.317	429.4	72.4	7.845	568.2	448.3	9.975	4471.7	8757.7
43	21.999	2011-Dec-14	11:04:30	141.52	3289.2	1354.4	0.317	429.6	72.4	7.845	568.2	448.3	9.975	4471.7	8758.6
44	22.999	2011-Dec-14	12:04:30	141.48	3289.6	1354.1	0.317	429.5	72.4	7.845	568.2	448.6	9.975	4474.7	8762.0
45	23.999	2011-Dec-14	13:04:30	141.48	3289.6	1354.1	0.317	429.5	72.4	7.845	568.2	448.6	9.975	4474.7	8762.0
46	24.999	2011-Dec-14	14:04:30	141.48	3289.3	1354.1	0.317	429.5	72.4	7.845	568.2	448.6	9.975	4474.7	8761.8
47	26.999	2011-Dec-14	16:04:30	141.48	3289.8	1354.1	0.317	429.5	72.4	7.845	568.2	448.6	9.975	4474.7	8762.3
48	28.999	2011-Dec-14	18:04:30	141.46	3289.1	1353.9	0.317	429.4	72.4	7.845	568.2	448.8	9.976	4476.7	8763.4
49	30.999	2011-Dec-14	20:04:30	141.45	3290.4	1353.8	0.317	429.6	72.4	7.845	568.2	448.9	9.976	4477.6	8765.8
50	32.999	2011-Dec-14	22:04:30	141.45	3290.8	1353.7	0.317	429.6	72.4	7.845	568.2	449.0	9.976	4478.5	8767.1
51	35.000	2011-Dec-15	00:04:31	141.44	3290.2	1353.6	0.317	429.5	72.4	7.845	568.2	449.0	9.976	4479.4	8767.4
52	37.000	2011-Dec-15	02:04:31	141.43	3290.8	1353.5	0.317	429.5	72.4	7.845	568.2	449.1	9.976	4480.3	8768.9
53	39.000	2011-Dec-15	04:04:31	141.42	3290.3	1353.4	0.317	429.4	72.4	7.845	568.2	449.2	9.976	4481.2	8769.2
54	41.000	2011-Dec-15	06:04:31	141.41	3290.0	1353.4	0.317	429.4	72.4	7.845	568.2	449.3	9.976	4482.1	8769.7
55	43.000	2011-Dec-15	08:04:31	141.40	3290.7	1353.3	0.317	429.4	72.4	7.845	568.2	449.4	9.976	4483.0	8771.3
56	45.000	2011-Dec-15	10:04:31	141.39	3291.4	1353.2	0.317	429.5	72.4	7.845	568.2	449.5	9.976	4483.9	8773.0
57	47.000	2011-Dec-15	12:04:31	141.38	3291.7	1353.1	0.317	429.5	72.4	7.845	568.2	449.6	9.976	4484.8	8774.2
58	49.000	2011-Dec-15	14:04:31	141.37	3291.8	1353.0	0.317	429.5	72.4	7.845	568.2	449.7	9.976	4485.7	8775.3
59	52.000	2011-Dec-15	17:04:31	141.36	3291.8	1352.9	0.317	429.5	72.4	7.845	568.2	449.8	9.976	4486.6	8776.1
60	55.000	2011-Dec-15	20:04:31	141.35	3291.9	1352.8	0.317	429.5	72.4	7.845	568.2	449.9	9.976	4487.5	8777.2
61	58.000	2011-Dec-15	23:04:31	141.34	3291.3	1352.7	0.317	429.3	72.4	7.845	568.2	449.9	9.976	4488.5	8777.3
62	61.000	2011-Dec-16	02:04:31	141.33	3291.6	1352.6	0.317	429.4	72.4	7.845	568.2	450.0	9.976	4489.4	8778.5
63	64.000	2011-Dec-16	05:04:31	141.32	3291.8	1352.5	0.317	429.4	72.4	7.845	568.2	450.1	9.976	4490.3	8779.7
64	67.000	2011-Dec-16	08:04:31	141.31	3291.2	1352.5	0.317	429.2	72.4	7.845	568.2	450.2	9.976	4491.2	8779.8
65	70.000	2011-Dec-16	11:04:31	141.30	3291.9	1352.4	0.317	429.3	72.4	7.845	568.2	450.3	9.976	4492.1	8781.5
66	73.000	2011-Dec-16	14:04:31	141.29	3291.2	1352.2	0.317	429.2	72.4	7.845	568.2	450.5	9.976	4493.8	8782.4
67	77.000	2011-Dec-16	18:04:31	141.27	3291.4	1352.0	0.317	429.1	72.4	7.845	568.2	450.6	9.976	4495.5	8784.2
68	81.000	2011-Dec-16	22:04:31	141.25	3291.8	1351.9	0.317	429.2	72.4	7.845	568.2	450.8	9.976	4497.1	8786.3
69	85.000	2011-Dec-17	02:04:31	141.23	3291.3	1351.7	0.317	429.0	72.4	7.846	568.2	451.0	9.976	4498.8	8787.4
70	89.000	2011-Dec-17	06:04:31	141.22	3291.8	1351.5	0.317	429.0	72.4	7.846	568.2	451.1	9.976	4500.4	8789.4
71	93.000	2011-Dec-17	10:04:31	141.20	3291.5	1351.4	0.317	429.0	72.4	7.846	568.2	451.3	9.976	4502.1	8790.8
72	97.000	2011-Dec-17	14:04:31	141.18	3292.0	1351.2	0.317	429.0	72.4	7.846	568.2	451.5	9.976	4503.8	8793.0
73	103.000	2011-Dec-17	20:04:31	141.16	3291.3	1351.0	0.317	428.8	72.4	7.846	568.2	451.6	9.976	4505.4	8793.8
74	109.000	2011-Dec-18	02:04:31	141.15	3291.8	1350.9	0.317	428.9	72.4	7.846	568.2	451.8	9.976	4507.1	8796.0
75	115.000	2011-Dec-18	08:04:31	141.13	3291.3	1350.7	0.317	428.7	72.4	7.846	568.2	452.0	9.976	4508.8	8797.0
76	123.000	2011-Dec-18	16:04:31	141.10	3291.3	1350.4	0.317	428.7	72.4	7.846	568.2	452.2	9.976	4511.4	8799.6
77	131.000	2011-Dec-19	00:04:31	141.08	3291.2	1350.2	0.317	428.6	72.4	7.846	568.2	452.5	9.976	4514.0	8802.0
78	139.000	2011-Dec-19	08:04:31	141.05	3292.0	1349.9	0.317	428.6	72.4	7.846	568.2	452.7	9.976	4516.5	8805.3
79	147.000	2011-Dec-19	16:04:31	141.03	3291.3	1349.8	0.317	428.4	72.4	7.846	568.2	452.9	9.976	4518.2	8806.2
80	155.000	2011-Dec-20	00:04:31	141.02	3291.9	1349.6	0.317	428.5	72.4	7.846	568.2	453.1	9.976	4519.7	8808.3
81	163.000	2011-Dec-20	08:04:31	141.00	3291.5	1349.5	0.317	428.4	72.4	7.846	568.2	453.2	9.976	4521.1	8809.2
82	171.000	2011-Dec-20	16:04:31	140.99	3291.4	1349.3	0.317	428.3	72.4	7.846	568.2	453.3	9.976	4522.4	8810.4